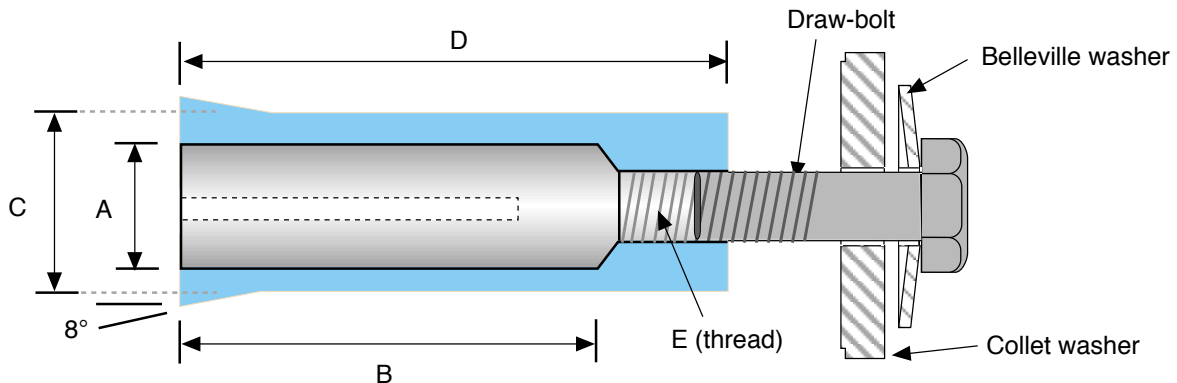


# Collet Bushings



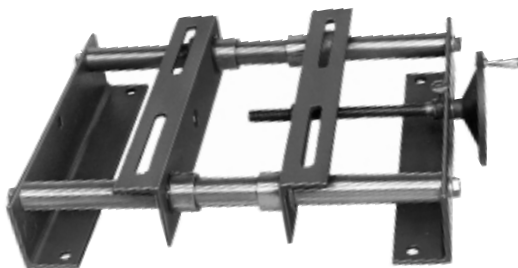
## Collet Bushings

All dimensions are in inches

Collet No.	Standard Bore Sizes (Inches)	B	C	D	E
7707	.5, .625, .75, .875	2.5	1	3.25	.325 – 16
508	.625, .75, .875, 1, 1.125	3	1.25	3.75	.325 – 16
510	.75, .875, 1, 1.125, 1.25, 1.375	3.625	1.5	4.625	.5 – 13
512	1, 1.125, 1.25, 1.375, 1.5, 1.625	4	1.75	5	.5 – 13
7713	1.375, 1.5, 1.625, 1.875	4.875	2.125	6.125	.625 – 11

## Motor Bases continued on next page

**Hi-Lo Motor Bases** for *Adjustable Center Distance Drives* have been designed to accommodate NEMA motor frame sizes 48 through 286T, with rigid steel construction, and lube free bushings in the motor mount plates for easy adjustment and greater wearability on the 214, 254 & 284 models.



## Motor Base Selection

NEMA Motor Frame No.	Motor H.P. at 1800 RPM	Hi-Lo Motor Base Number				
		130	145	213	254	284
48		•				
56	.25 thru .75	•	•			
182	1		•			
143T	1	•	•			
184	1.5 & 2		•	•		
145T	1.5 & 2		•			
213	3			•		
182T	3		•	•		
215	5			•	•	
184T	5			•	•	
254U	7.5				•	
213T	7.5				•	
256U	10					
215T	10				•	
284U	15					
254T	15				•	
256T	20					•
284T	25					•
286T	30					•